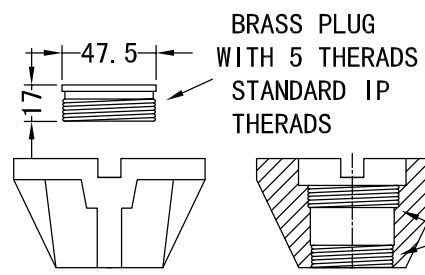
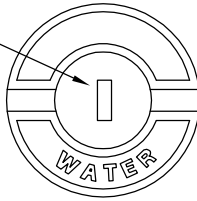
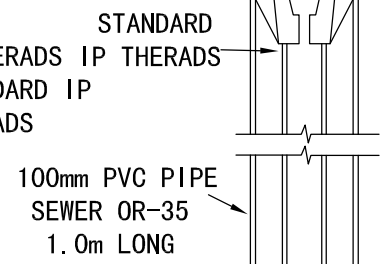


SLOT  
6mmX9mmX  
10mm DEEP



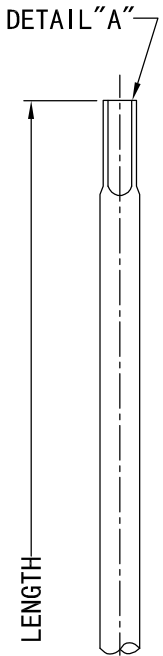
IRON CAP

BRASS PLUG  
WITH 5 THERADS  
STANDARD IP  
THERADS

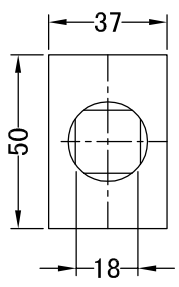


STANDARD  
5 THERADS IP THERADS  
STANDARD IP  
THERADS

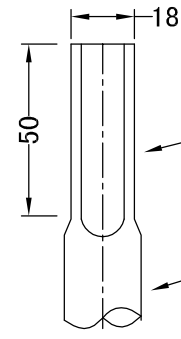
100mm PVC PIPE  
SEWER OR-35  
1.0m LONG



1525mm ROD LENGTH

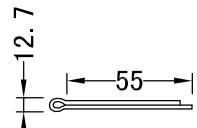


DETAIL "A"



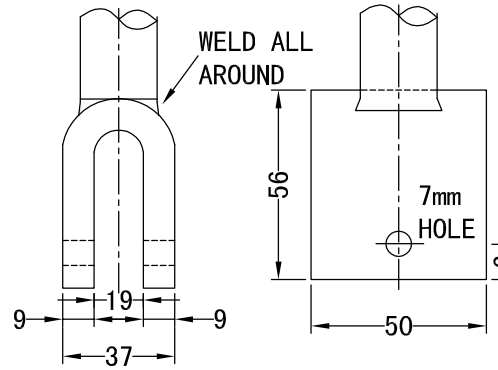
18X18X50 SQUARED END  
FORMED ON 22DIA ROD

22 DIA MILD STEEL  
ROD (7/8")



STAINLESS STEEL  
COTTER PIN

1525mmx22mmMILD  
STEEL OPERATING ROD FASTENED  
WITH STAINLESS STEEL COTTER  
PIN TO CURB STOP



WELD ALL  
AROUND

56

7mm  
HOLE

9 19 9 37

TOP TUBE  
32mm (1 1/4") GALVANIZED  
SCHEDULE 40 PIPE  
1.6m (5' -3") LONG

BOTTOM TUBE  
25mm (1") GALVANIZED  
SCHEDULE 40 PIPE  
1.3m (4' -3") LONG

CC CHAIR TO SUIT CURB  
COCK & SERVICE BOX BOOT

FASTEN WITH  
2-10mmX50mm  
LONG LAG BOLTS

50mmX150mmX300mm  
TREATED WOOD BLOCK

HOLE PLACEMENT 7mm DIA.HOLE DRILLED  
6mm TO CENTER FROM BOTTOM OF CLEVIS

STAINLESS STEEL  
COTTER PIN

NOTES:

1. ALL DIMENSIONS ARE IN MILLIMETERS UNLESS OTHERWISE SPECIFIED.
2. OPERATING ROD SHALL BE SUPPLIED AS A SINGLE UNIT COMPRISED OF A SOLID MILE STEEL ROD WITH A MILD STEEL CLEVIS WELDED TO IT.